

NTT Communications

Cloud<sup>n</sup>

# **RDB Operation Manual**

**Ver.1.0**

Any secondary distribution of the materials in this document (distribution, reproduction, provision, etc.) is prohibited.

Version no.	Revision date	Revision details
Ver.1.0	4/10/2013	Created 1 <sup>st</sup> draft

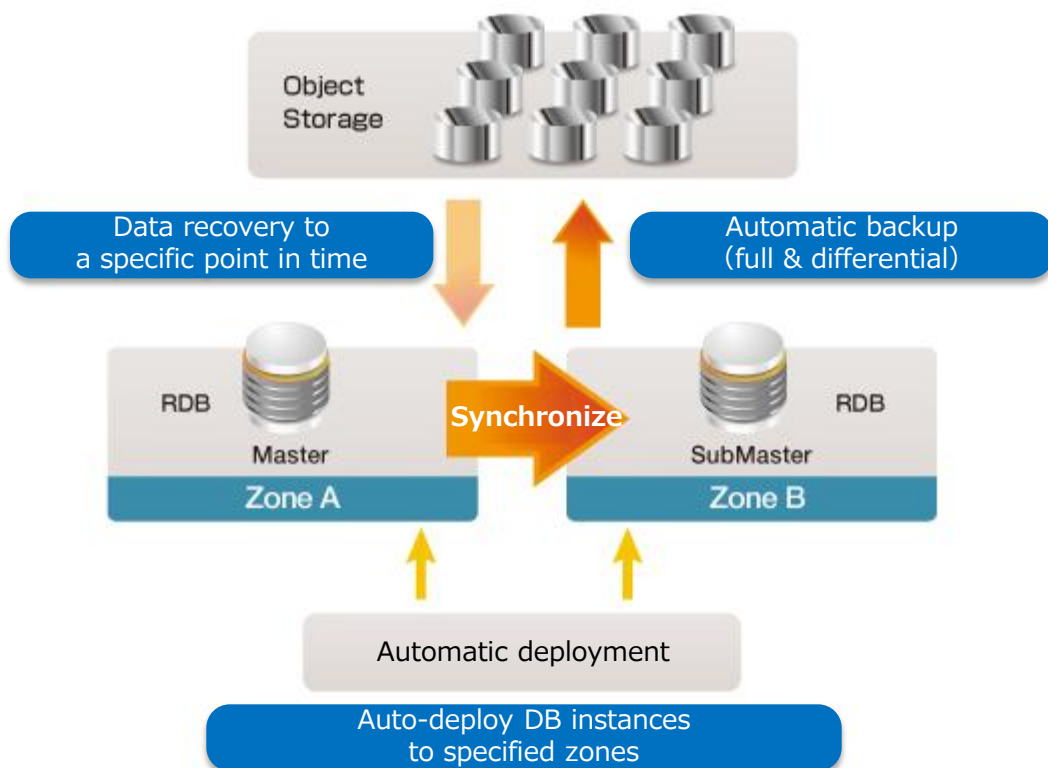
# Table of Contents

<b>1. Introduction</b>	<b>P4</b>
1) <a href="#">Service overview</a>	
2) <a href="#">Making preparation</a>	
<b>2. Preparing for RDB Service</b>	<b>P6</b>
1) <a href="#">Launching RDB console</a>	
<b>3. Using RDB Service</b>	<b>P7</b>
1) <a href="#">Launching DB instances</a>	
2) <a href="#">Accessing DB instances</a>	
3) <a href="#">Deleting DB instances</a>	

# 1-1) Service overview

Cloud<sup>n</sup> RDB is a relational database service provided by Cloud<sup>n</sup>. Cloud<sup>n</sup> RDB makes it easy to set up, operate, and expand a relational database. This relieves customers from time-consuming database management, and provides flexibly scalable functions at low cost, allowing the customers to concentrate on application development and their businesses.

- Time-consuming relational database management/operations are made easy and cost-effective.
    - Data transfer and I/O are provided free of charge.
  - Realizes high availability and reliability through mirroring by multi-zone configuration.
    - When multi-zone configuration is selected, 2 DB instances are automatically deployed as Master and SubMaster, constantly synchronizing to keep themselves up to date.
    - Single-zone configuration is also possible.
  - Automatic backup function allows for data recovery to a specific point in time that the customer specified
    - In automatic backup, full backups and differential backups are automatically obtained and stored in Cloud<sup>n</sup> Object Storage with 99.999999999% (eleven-nine) robustness for a specified retention period.
    - DB instances can be restored at any point of time within the retention period before a maximum of 5 minutes.
- If you have any questions, please contact us through Support Portal connected from the Cloud<sup>n</sup> Portal.



## 1-2) Making preparation

Before using Cloud<sup>n</sup> RDB, make sure that you have the following items.

**Devices for Internet connection**

Check that PCs, modems, and other devices necessary for Internet/intranet connection are in place.

**Internet connection service**

Sign up for Internet connection service.

e.g.) Any 24-hour Internet connection service, such as OCN Dial Access Service, OCN ADSL Connection Service, Super OCN.

- You can use other Internet service providers.

- If a proxy server is used in your environment, check that https (port no. 443) is open.

**Software for browsing the control panel (browser)**

Firefox18.0.1 or later version is recommended.

Note that display by any other browser may not be partially normal.

**“Cloud<sup>n</sup> Service Guide” mail**

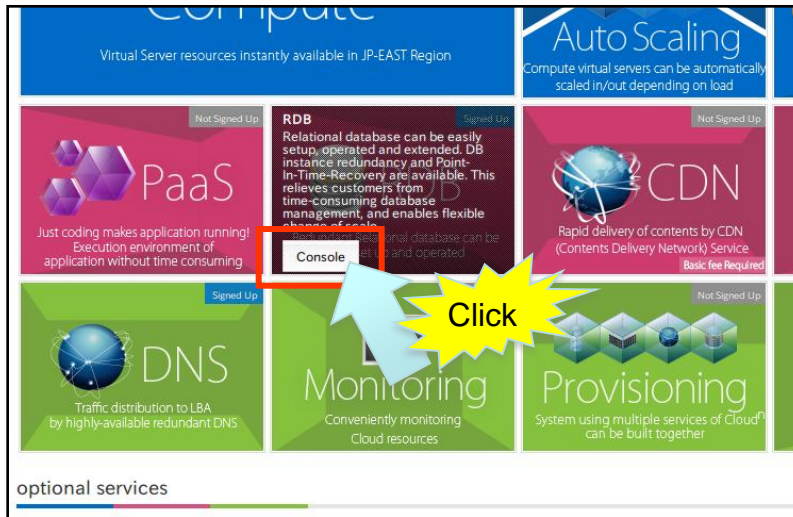
Make sure you have “Cloud<sup>n</sup> Service Guide” at hand, which was delivered at the start of the service.

# 2-1) Launching RDB console

This section explains how to launch the RDB console.

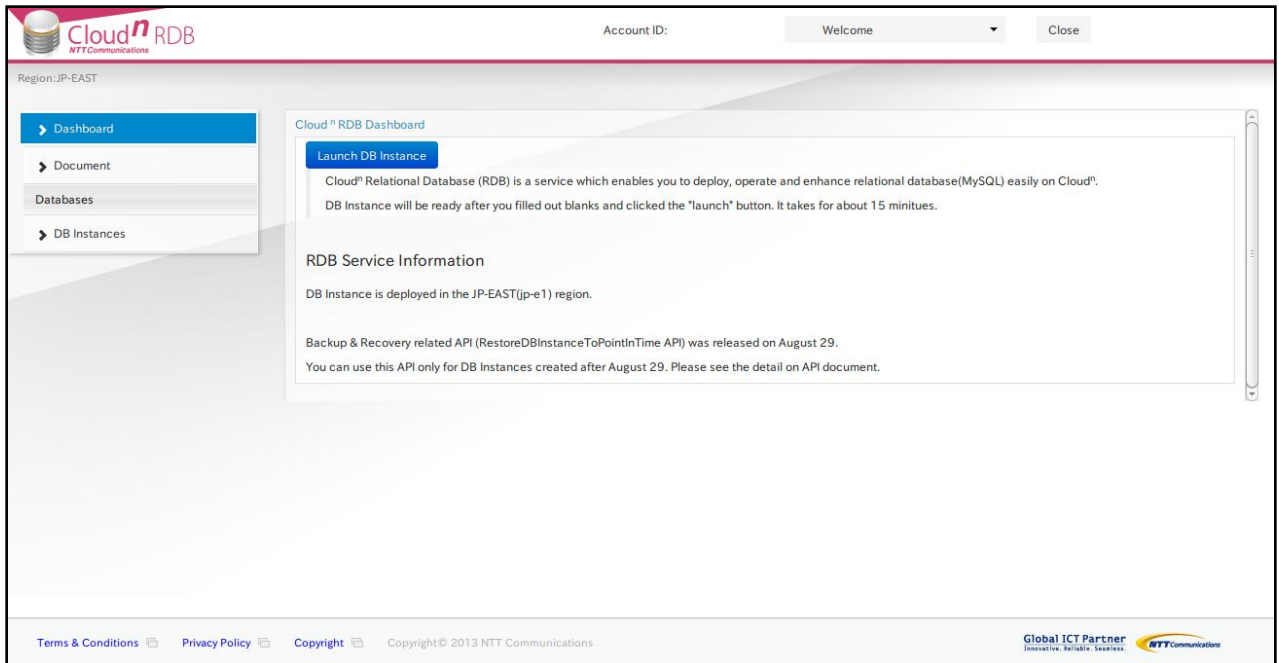
1

Login Cloud<sup>n</sup> Portal, pose over the relevant “RDB” icon in your region, and then click [To console] displayed in the box



2

The RDB console is launched in a new window.

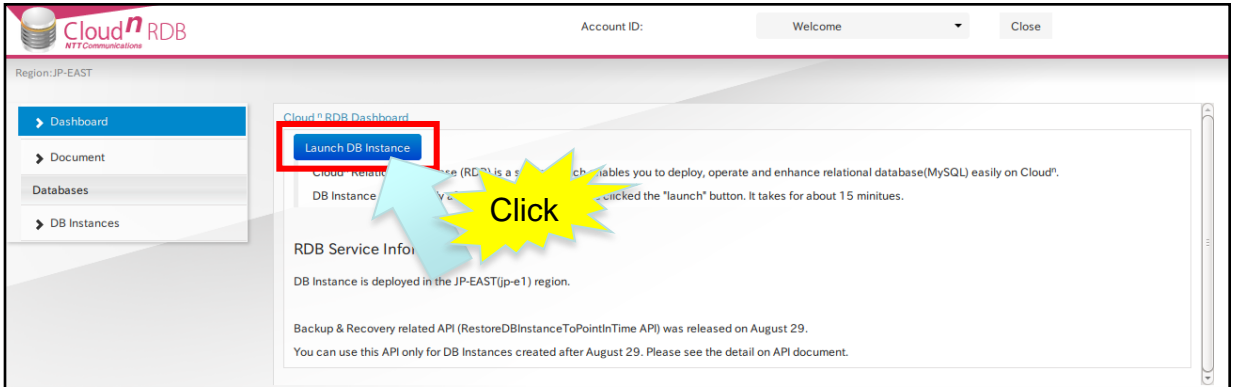


# 3-1) Launching DB instances

This section explains how to launch DB instances.

1

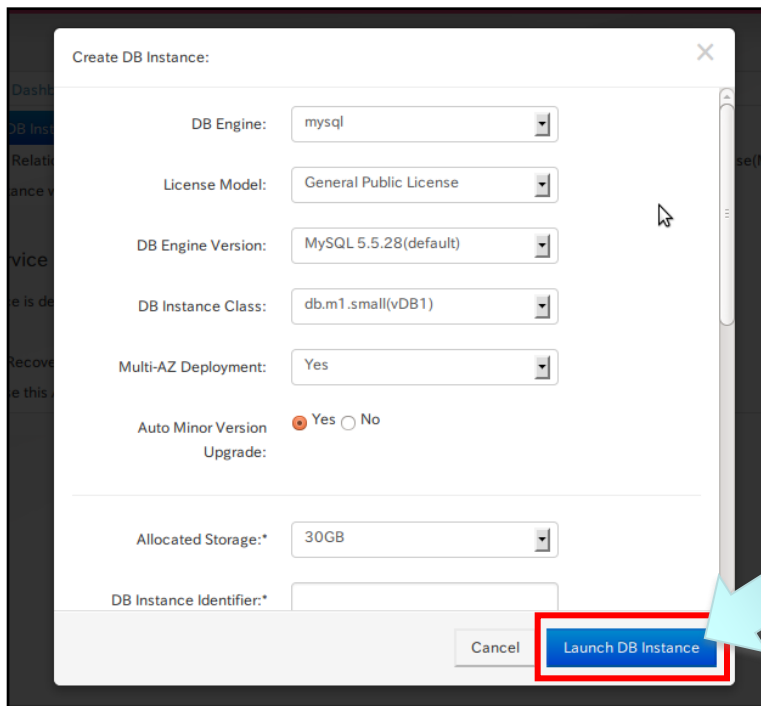
Click [Launch DB instance] from the dashboard menu of RDB console.



You can also launch from [Launch DB instance] of the DB instance menu.

2

Enter settings for the instance you want to launch, and click [Launch DB instance].

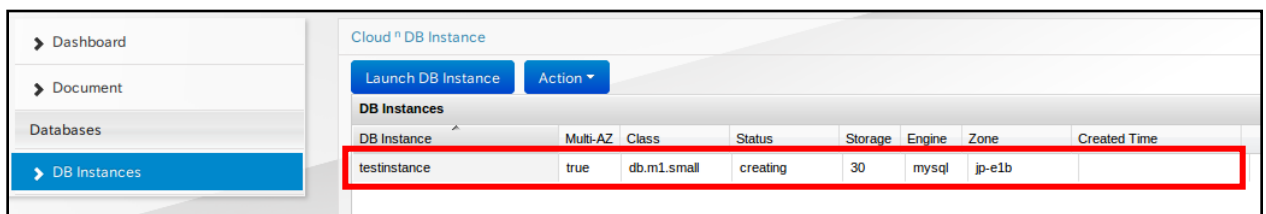


## 3-1) Launching DB instances

Parameter	Meaning
DB Engine Version	Fixed to “MySQL 5.5.28” by default.
DB Instance Class	Select a database configuration.
Multi-AZ Deployment	Select whether to use the database in multiple zones.
Auto Minor Version Upgrade	Select if you want to automatically receive database upgrades as soon as it is released.
Allocated Storage	Select the storage capacity you want to allocate to the database.
DB Instance Identifier	Enter the name of database instance.
Master Username	Enter the name of master user who has all the privileges for the database.
Master Password	Enter the master user’s password.
Database Name	Enter the name of database.
Database Port	Enter the port no. used for database access. If you are using the default port (MySQL), the port no. is 3306.
Enabled Automatic Backups	Select whether to use the automatic backup function.
Maintenance Window	Select the maintenance hours. You can set the time window in detail by selecting [Select Window].

### 3

The display transitions to the DB Instance menu, which lists the instances you have launched. In the following sample, a DB instance named “testinstance” was created.



DB Instance	Multi-AZ	Class	Status	Storage	Engine	Zone	Created Time
testinstance	true	db.m1.small	creating	30	mysql	jp-e1b	

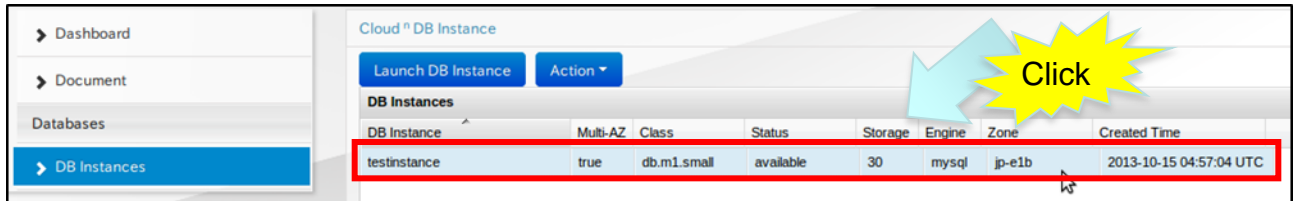


## 3-2) Accessing DB instances

This section explains how to access the DB instance. In the following example, the user accesses from a Linux console in mysql environment.

1

Click the DB instance you want to access from the DB Instance menu of RDB console. In the following example, "testinstance" is selected.



Cloud RDS Instance

Launch DB Instance Action

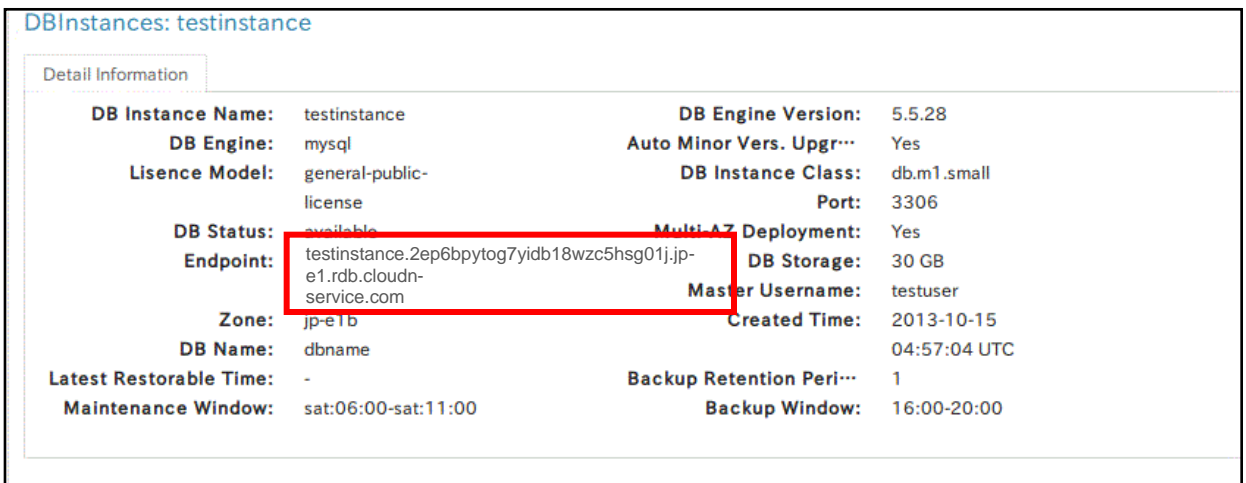
DB Instance	Multi-AZ	Class	Status	Storage	Engine	Zone	Created Time
testinstance	true	db.m1.small	available	30	mysql	jp-e1b	2013-10-15 04:57:04 UTC



DB instance information appears after the [Status] of DB instance changes to [Available]. It takes time until [Available] appears in [Status].

2

DB instance information appears in the lower part of the screen. Check the information displayed in [Endpoint].



DBInstances: testinstance

Detail Information

<b>DB Instance Name:</b>	testinstance	<b>DB Engine Version:</b>	5.5.28
<b>DB Engine:</b>	mysql	<b>Auto Minor Vers. Upgr...</b>	Yes
<b>Lisence Model:</b>	general-public- license	<b>DB Instance Class:</b>	db.m1.small
<b>DB Status:</b>	available	<b>Port:</b>	3306
<b>Endpoint:</b>	testinstance.2ep6bpytog7yidb18wzc5hsg01j.jp- e1.rdb.cloudn- service.com	<b>Multi-AZ Deployment:</b>	Yes
<b>Zone:</b>	jp-e1b	<b>DB Storage:</b>	30 GB
<b>DB Name:</b>	dbname	<b>Master Username:</b>	testuser
<b>Latest Restorable Time:</b>	-	<b>Created Time:</b>	2013-10-15 04:57:04 UTC
<b>Maintenance Window:</b>	sat:06:00-sat:11:00	<b>Backup Retention Peri...</b>	1
		<b>Backup Window:</b>	16:00-20:00

## 3-2) Accessing DB instances

### 3

Access mysql using the below command in Linux console. As an example, the following shows how to access the endpoint you confirmed in Step 2, by using the master username entered in the same step.

```
$ mysql -h testinstance.2ep6bpytog7yidb18wzc5hsg01j.jp-e1.rdb.cloudn-  
service.com -u testuser -p
```



When using CentOS, you can prepare mysql environment using the following command.

```
$ yum -y install mysql-server
```

### 4

When asked for a password as below, enter the password you set at the time of instance launch.

```
Enter password:
```

### 5

You are connected to the DB instance.

```
Welcome to the MySQL monitor. Commands end with ; or \g.  
Your MySQL connection id is 161  
Server version: 5.5.28-0ubuntu0.12.04.3-log (Ubuntu)
```

```
Copyright (c) 2000, 2012, Oracle and/or its affiliates. All rights reserved.
```

```
Oracle is a registered trademark of Oracle Corporation and/or its affiliates.  
Other names may be trademarks of their respective owners.
```

```
Type 'help;' or '\h' for help. Type '\c' to clear the current input statement.
```

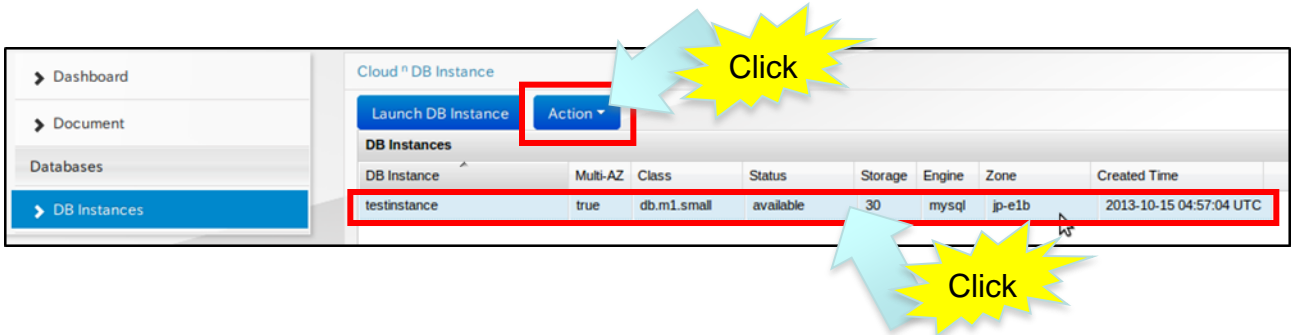
```
mysql>
```

## 3-3) Deleting DB instances

This section shows how to delete a DB instance.

1

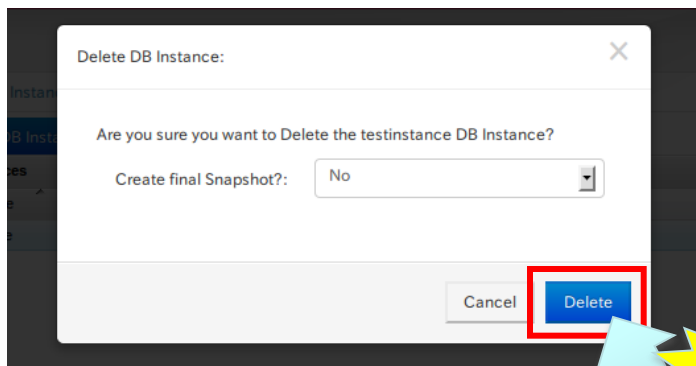
Click the DB instance you want to delete from the DB Instance menu of RDB console, and click [Action]. In the following example, “testinstance” is selected.



You cannot delete the DB instance if its [Status] is [Creating...]. You need to wait until it changes to [Available].

2

When a confirmation display appears, click [Delete] to delete the DB instance.



[Deleting...] appears in the display until it is completely deleted.